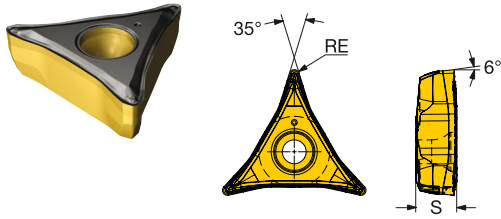


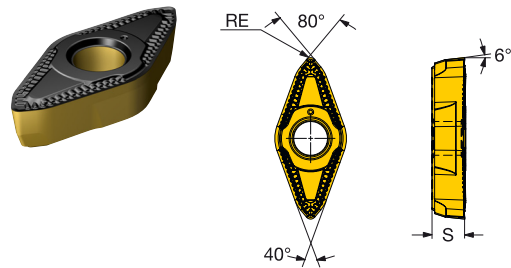
Plaquita CoroTurn® Prime para torneado

Plaquita tipo A



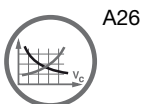
		SSC	S	REEQ	RE	CÓDIGO ISO	P	
							4415	4425
Acabado	L5	CP-A	6.00	0.4	0.40	CP-A1104-L5	★	☆
			.236	.016	.016			
			6.00	0.8	0.79	CP-A1108-L5	★	☆
	L3W	CP-A	6.00	0.8	0.80	CP-A1108-L5W	★	☆
			.236	.031	.031			
	L3	CP-A	6.00		0.79	CP-A1108-L3	★	☆
		.236		.031				
L3WX	CP-A	6.00	0.8	0.80	CP-A1108-L3WX	★	☆	
		.236	.031	.031				

Plaquita tipo B



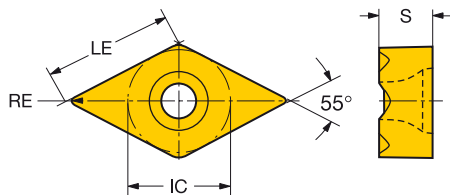
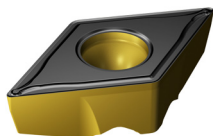
		SSC	S	REEQ	RE	CÓDIGO ISO	P	
							4425	
Acabado	L4	CP-B	5.00	0.8	0.80	CP-B1108-L4	★	
			.197	.031	.031			
	L4W	CP-B	5.00	0.8	0.80	CP-B1108-L4W	★	
			.197	.031	.031			
Medio	M5	CP-B	5.00	0.8	0.80	CP-B1108-M5	★	
			.197	.031	.031			
	M5W	CP-B	5.00	0.8	0.80	CP-B1108-M5W	★	
			.197	.031	.031			
	H3W	CP-B	5.00	0.8	0.80	CP-B1108-H3W	★	
			.197	.031	.031			
	H3	CP-B	5.00	0.8	0.80	CP-B1108-H3	★	
			.197	.031	.031			

SSC = Debe corresponderse con el SSC del portaherramientas.



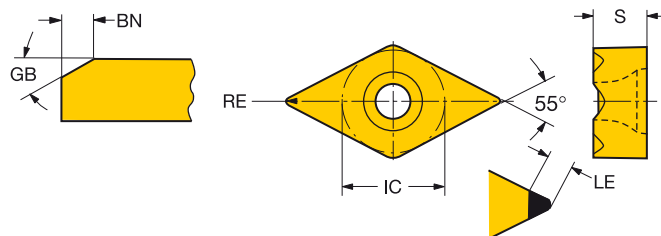
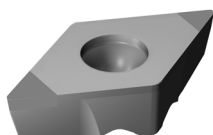
Plaquita CoroTurn® TR para torneado

Plaquita tipo D (Rómbica de 55°)



Acabado	F	LE	S	RE	CÓDIGO ISO	P		
						4415	4425	
Acabado	F	13	12.6	5.53	0.40	TR-DC1304-F	★ ☆	
			.496	.218	.016			
		12.2	5.53	0.79	TR-DC1308-F	★ ☆		
			.480	.218	.031			
Medio	M	13	12.2	5.53	0.79	TR-DC1308-M	☆ ★	
			.480	.218	.031			
		11.8	5.53	1.19	TR-DC1312-M	☆ ★		
			.465	.218	.047			

Materiales de corte avanzados



Acabado	EF	LE	S	RE	CÓDIGO ISO	S		
						7014		
Acabado	EF	13	3.0	5.53	0.79	TR-DC1308EF	★	
			.118	.218	.031			
		2.6	5.53	1.19	TR-DC1312EF	★		
			.104	.218	.047			



A26



F2

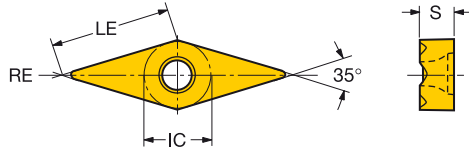
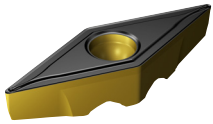
A

TORNEADO GENERAL

Plaquitas

Plaquita CoroTurn® TR para torneado

Plaquita tipo V (Rómbica de 35°)

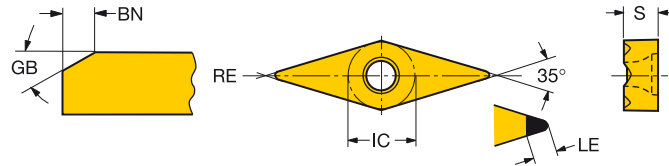
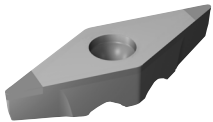


B

Acabado	F	LE	S	RE	CÓDIGO ISO	P	
						4415	4425
F	13	12.6	4.53	0.40	TR-VB1304-F	★	☆
		.496	.178	.016			
	12.2	4.53	0.79		TR-VB1308-F	★	☆
		.480	.178	.031			
	11.8	4.53	1.19		TR-VB1312-F	★	☆
		.465	.178	.047			

C

Materiales de corte avanzados



D

Acabado	EF	LE	S	RE	CÓDIGO ISO	S	
						7014	
EF	13	3.0	4.53	0.79	TR-VB1308EF	★	
		.118	.178	.031			
	2.1	4.53	1.19		TR-VB1312EF	★	
		.084	.178	.047			

E

F



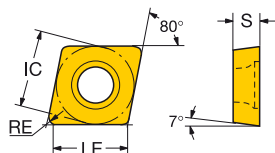
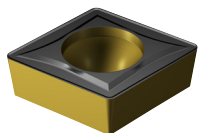
A26



F2

Plaquita CoroTurn® 107 para torneado

Plaquita tipo C (Rómbica de 80°)



		LE	S	RE	CÓDIGO ISO	P		CÓDIGO ANSI		
						4415	4425			
Acabado	WF	06	1/4	6.0	2.38	0.40	★	☆	CCMT 2(1.5)1-WF	
				.238	.094	.016				
				5.6	2.38	0.79	★	☆	CCMT 2(1.5)2-WF	
				.222	.094	.031				
		09	3/8	9.3	3.97	0.40	★	☆	CCMT 3(2.5)1-WF	
				.365	.156	.016				
			8.9	3.97	0.79	★	☆	CCMT 3(2.5)2-WF		
			.349	.156	.031					
	PF	06	1/4	6.2	2.38	0.20		★	CCMT 2(1.5)0-PF	
				.246	.094	.008				
				6.0	2.38	0.40	★		CCMT 2(1.5)1-PF	
				.238	.094	.016				
09		3/8	9.3	3.97	0.40	★	☆	CCMT 3(2.5)1-PF		
			.365	.156	.016					
		8.9	3.97	0.79	★	☆	CCMT 3(2.5)2-PF			
		.349	.156	.031						
	12	1/2	12.5	4.76	0.40	★	☆	CCMT 431-PF		
		.492	.188	.016						
UF	06	1/4	6.0	2.38	0.40	★	☆	CCMT 2(1.5)1-UF		
			.238	.094	.016					
			9.3	3.97	0.40	★	☆	CCMT 3(2.5)1-UF		
			.365	.156	.016					
	09	3/8	9.3	3.97	0.40	★	☆	CCMT 3(2.5)1-UF		
			.365	.156	.016					
Medio	WM	06	1/4	5.6	2.38	0.79	☆	★	CCMT 2(1.5)2-WM	
				.222	.094	.031				
				9.3	3.97	0.40	☆	★	CCMT 3(2.5)1-WM	
				.365	.156	.016				
				8.9	3.97	0.79	☆	★	CCMT 3(2.5)2-WM	
				.349	.156	.031				
	PM	06	1/4	6.0	2.38	0.40	☆	★	CCMT 2(1.5)1-PM	
				.238	.094	.016				
				5.6	2.38	0.79	☆	★	CCMT 2(1.5)2-PM	
				.222	.094	.031				
		09	3/8	9.3	3.97	0.40	☆	★	CCMT 3(2.5)1-PM	
				.365	.156	.016				
			8.9	3.97	0.79	☆	★	CCMT 3(2.5)2-PM		
			.349	.156	.031					
UM		12	1/2	12.5	4.76	0.40	☆	★	CCMT 431-PM	
				.492	.188	.016				
				12.1	4.76	0.79	☆	★	CCMT 432-PM	
				.476	.188	.031				
			11.7	4.76	1.19	☆	★	CCMT 433-PM		
			.460	.188	.047					
UM	06	1/4	6.0	2.38	0.40	☆	★	CCMT 2(1.5)1-UM		
			.238	.094	.016					
			9.3	3.97	0.40	☆	★	CCMT 3(2.5)1-UM		
			.365	.156	.016					
			8.9	3.97	0.79	☆	★	CCMT 3(2.5)2-UM		
			.349	.156	.031					
	12	1/2	12.1	4.76	0.79	☆	★	CCMT 432-UM		
		.476	.188	.031						



A26

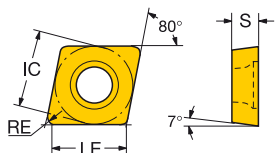
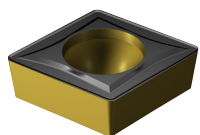


F2



Plaquita CoroTurn® 107 para torneado

Plaquita tipo C (Rómbica de 80°)



B

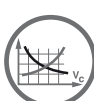
		LE	S	RE	CÓDIGO ISO	P		CÓDIGO ANSI			
						4415	4425				
Desbaste	PR	06	1/4	5.6	2.38	0.79	☆	★	CCMT 2(1.5)2-PR		
				.222	.094	.031					
		09	3/8	8.9	3.97	0.79	☆	★	CCMT 3(2.5)2-PR		
				.349	.156	.031					
				8.5	3.97	1.19	☆	★	CCMT 3(2.5)3-PR		
				.334	.156	.047					
		UR	12	1/2	12.1	4.76	0.79	☆	★	CCMT 432-PR	
				.476	.188	.031					
				11.7	4.76	1.19	☆	★	CCMT 433-PR		
				.460	.188	.047					
				09	3/8	9.3	3.97	0.40	☆	★	CCMT 3(2.5)1-UR
				.365	.156	.016					
				8.9	3.97	0.79	☆	★	CCMT 3(2.5)2-UR		
				.349	.156	.031					
		12	1/2	12.1	4.76	0.79	☆	★	CCMT 432-UR		
				.476	.188	.031					

C

D

E

F



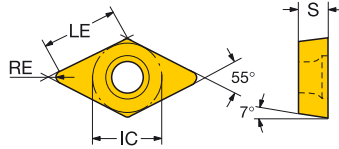
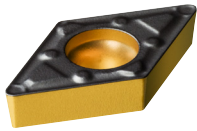
A26



F2

Plaquita CoroTurn® 107 para torneado

Plaquita tipo D (Rómbica de 55°)



		LE	S	RE	CÓDIGO ISO	P		CÓDIGO ANSI			
						4415	4425				
Acabado	WF	07	1/4	7.4	2.38	0.40	DCMX 07 02 04-WF	★ ☆	DCMX 2(1.5)1-WF		
				.289	.094	.016					
				7.0	2.38	0.79	DCMX 07 02 08-WF	★ ☆	DCMX 2(1.5)2-WF		
				.274	.094	.031					
		11	3/8	11.2	3.97	0.40	DCMX 11 T3 04-WF	★ ☆	DCMX 3(2.5)1-WF		
				.442	.156	.016					
			10.8	3.97	0.79	DCMX 11 T3 08-WF	★ ☆	DCMX 3(2.5)2-WF			
			.426	.156	.031						
		PF	07	1/4	7.4	2.38	0.40	DCMT 07 02 04-PF	★ ☆	DCMT 2(1.5)1-PF	
				.289	.094	.016					
				11	3/8	11.2	3.97	0.40	DCMT 11 T3 04-PF	★ ☆	DCMT 3(2.5)1-PF
				.442	.156	.016					
			10.8	3.97	0.79	DCMT 11 T3 08-PF	★ ☆	DCMT 3(2.5)2-PF			
			.426	.156	.031						
	UF	07	1/4	7.4	2.38	0.40	DCMT 07 02 04-UF	★ ☆	DCMT 2(1.5)1-UF		
			.289	.094	.016						
			11	3/8	11.2	3.97	0.40	DCMT 11 T3 04-UF	★ ☆	DCMT 3(2.5)1-UF	
			.442	.156	.016						
			10.8	3.97	0.79	DCMT 11 T3 08-UF	★ ☆	DCMT 3(2.5)2-UF			
			.426	.156	.031						
Medio	WM	11	3/8	11.2	3.97	0.40	DCMX 11 T3 04-WM	☆ ★	DCMX 3(2.5)1-WM		
				.442	.156	.016					
				10.8	3.97	0.79	DCMX 11 T3 08-WM	☆ ★	DCMX 3(2.5)2-WM		
				.426	.156	.031					
			PM	07	1/4	7.4	2.38	0.40	DCMT 07 02 04-PM	☆ ★	DCMT 2(1.5)1-PM
					.289	.094	.016				
				7.0	2.38	0.79	DCMT 07 02 08-PM	☆ ★	DCMT 2(1.5)2-PM		
				.274	.094	.031					
				11	3/8	11.2	3.97	0.40	DCMT 11 T3 04-PM	☆ ★	DCMT 3(2.5)1-PM
				.442	.156	.016					
			10.8	3.97	0.79	DCMT 11 T3 08-PM	☆ ★	DCMT 3(2.5)2-PM			
			.426	.156	.031						
			10.4	3.97	1.19	DCMT 11 T3 12-PM	☆ ★	DCMT 3(2.5)3-PM			
			.411	.156	.047						
		UM	07	1/4	7.4	2.38	0.40	DCMT 07 02 04-UM	☆ ★	DCMT 2(1.5)1-UM	
				.289	.094	.016					
				7.0	2.38	0.79	DCMT 07 02 08-UM	☆ ★	DCMT 2(1.5)2-UM		
				.274	.094	.031					
			11	3/8	11.2	3.97	0.40	DCMT 11 T3 04-UM	☆ ★	DCMT 3(2.5)1-UM	
			.442	.156	.016						
		10.8	3.97	0.79	DCMT 11 T3 08-UM	☆ ★	DCMT 3(2.5)2-UM				
		.426	.156	.031							
Desbaste	PR	11	3/8	10.8	3.97	0.79	DCMT 11 T3 08-PR	☆ ★	DCMT 3(2.5)2-PR		
				.426	.156	.031					
				10.4	3.97	1.19	DCMT 11 T3 12-PR	☆ ★	DCMT 3(2.5)3-PR		
				.411	.156	.047					
			UR	11	3/8	11.2	3.97	0.40	DCMT 11 T3 04-UR	☆ ★	DCMT 3(2.5)1-UR
					.442	.156	.016				
				10.8	3.97	0.79	DCMT 11 T3 08-UR	☆ ★	DCMT 3(2.5)2-UR		
				.426	.156	.031					
			10.4	3.97	1.19	DCMT 11 T3 12-UR	☆ ★	DCMT 3(2.5)3-UR			
			.411	.156	.047						

B

C

D

E

F



A26

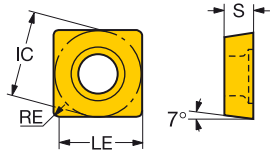
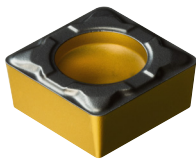


F2



Plaquita CoroTurn® 107 para torneado

Plaquita tipo S (Cuadrada)



B

					CÓDIGO ISO	P		CÓDIGO ANSI						
		IC	LE	S		RE	4415		4425					
Acabado	PF	09	3/8	9.1	3.97	0.40	★	☆	SCMT 09 T3 04-PF	★	☆	SCMT 3(2.5)1-PF		
				.359	.156	.016								
				8.7	3.97	0.79	★	☆	SCMT 09 T3 08-PF	★	☆	SCMT 3(2.5)2-PF		
			.344	.156	.031									
		UF	09	3/8	8.7	3.97	0.79	★	☆	SCMT 09 T3 08-UF	★	☆	SCMT 3(2.5)2-UF	
				.344	.156	.031								
			09	3/8	9.1	3.97	0.40	☆	★	SCMT 09 T3 04-PM	☆	★	SCMT 3(2.5)1-PM	
Medio	PM			.359	.156	.016								
				8.7	3.97	0.79	☆	★	SCMT 09 T3 08-PM	☆	★	SCMT 3(2.5)2-PM		
				.344	.156	.031								
				12	1/2	12.3	4.76	0.40	☆	★	SCMT 12 04 04-PM	☆	★	SCMT 431-PM
				.484	.188	.016								
				11.9	4.76	0.79	☆	★	SCMT 12 04 08-PM	☆	★	SCMT 432-PM		
		UM			.469	.188	.031							
				11.5	4.76	1.19	☆	★	SCMT 12 04 12-PM	☆	★	SCMT 433-PM		
				.453	.188	.047								
				09	3/8	8.7	3.97	0.79	☆	★	SCMT 09 T3 08-UM	☆	★	SCMT 3(2.5)2-UM
				.344	.156	.031								
				12	1/2	11.9	4.76	0.79	☆	★	SCMT 12 04 08-UM	☆	★	SCMT 432-UM
Desbaste	PR			.469	.188	.031								
				11.5	4.76	1.19	☆	★	SCMT 12 04 12-UM	☆	★	SCMT 433-UM		
				.453	.188	.047								
				09	3/8	8.7	3.97	0.79	☆	★	SCMT 09 T3 08-PR	☆	★	SCMT 3(2.5)2-PR
				.344	.156	.031								
				8.3	3.97	1.19	☆	★	SCMT 09 T3 12-PR	☆	★	SCMT 3(2.5)3-PR		
		UR			.328	.156	.047							
				12	1/2	11.9	4.76	0.79	☆	★	SCMT 12 04 08-PR	☆	★	SCMT 432-PR
				.469	.188	.031								
				11.5	4.76	1.19	☆	★	SCMT 12 04 12-PR	☆	★	SCMT 433-PR		
		.453	.188	.047										
		09	3/8	8.7	3.97	0.79	☆	★	SCMT 09 T3 08-UR	☆	★	SCMT 3(2.5)2-UR		
		.344	.156	.031										
		12	1/2	11.9	4.76	0.79	☆	★	SCMT 12 04 08-UR	☆	★	SCMT 432-UR		
		.469	.188	.031										

D

E

F



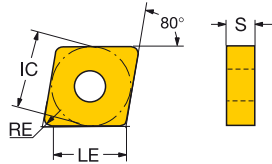
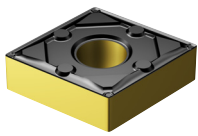
A26



F2

Plaquita T-Max® P para torneado

Plaquita tipo C (Rómbica de 80°)



		LE	S	RE	CÓDIGO ISO	P		CÓDIGO ANSI		
						4115	4425			
Acabado	WF	12	1/2	12.5	4.76	0.40	CNMG 12 04 04-WF	★ ☆	CNMG 431-WF	
				.492	.188	.016				
				12.1	4.76	0.79	CNMG 12 04 08-WF	★ ☆	CNMG 432-WF	
				.476	.188	.031				
			11.7	4.76	1.19	CNMG 12 04 12-WF	★ ☆	CNMG 433-WF		
			.460	.188	.047					
	PF	09	3/8	9.3	3.18	0.40	CNMG 09 03 04-PF	★ ☆	CNMG 321-PF	
				.365	.125	.016				
				8.9	3.18	0.79	CNMG 09 03 08-PF	★ ☆	CNMG 322-PF	
				.349	.125	.031				
			12	1/2	12.5	4.76	0.40	CNMG 12 04 04-PF	★ ☆	CNMG 431-PF
			.492	.188	.016					
		12.1	4.76	0.79	CNMG 12 04 08-PF	★ ☆	CNMG 432-PF			
		.476	.188	.031						
		11.7	4.76	1.19	CNMG 12 04 12-PF	★ ☆	CNMG 433-PF			
		.460	.188	.047						
LC	12	1/2	12.5	4.76	0.40	CNMG 12 04 04-LC	★ ☆	CNMG 431-LC		
			.492	.188	.016					
			12.1	4.76	0.79	CNMG 12 04 08-LC	★ ☆	CNMG 432-LC		
		.476	.188	.031						
WL	12	1/2	12.5	4.76	0.40	CNMG 12 04 04-WL	★ ☆	CNMG 431-WL		
			.492	.188	.016					
			12.1	4.76	0.79	CNMG 12 04 08-WL	★ ☆	CNMG 432-WL		
		.476	.188	.031						
XF	12	1/2	12.5	4.76	0.40	CNMG 12 04 04-XF	★ ☆	CNMG 431-XF		
			.492	.188	.016					
			12.1	4.76	0.79	CNMG 12 04 08-XF	★ ☆	CNMG 432-XF		
		.476	.188	.031						
Medio	WM	12	1/2	12.1	4.76	0.79	CNMG 12 04 08-WM	☆ ★	CNMG 432-WM	
				.476	.188	.031				
				11.7	4.76	1.19	CNMG 12 04 12-WM	☆ ★	CNMG 433-WM	
				.460	.188	.047				
			16	5/8	14.9	6.35	1.19	CNMG 16 06 12-WM	☆ ★	CNMG 543-WM
			.587	.250	.047					
	WMX	12	1/2	12.1	4.76	0.79	CNMG 12 04 08-WMX	☆ ★	CNMG 432-WMX	
				.476	.188	.031				
				11.7	4.76	1.19	CNMG 12 04 12-WMX	☆ ★	CNMG 433-WMX	
				.460	.188	.047				
			16	5/8	15.3	6.35	0.79	CNMG 16 06 08-WMX	☆ ★	CNMG 542-WMX
			.603	.250	.031					
		14.9	6.35	1.19	CNMG 16 06 12-WMX	☆ ★	CNMG 543-WMX			
		.587	.250	.047						

B

C

D

E

F



A26

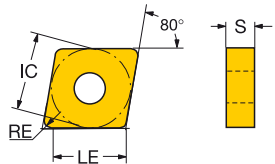
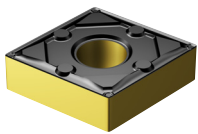


F2



Plaquita T-Max® P para torneado

Plaquita tipo C (Rómbica de 80°)



B

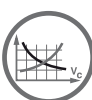
C

D

E

F

		LE	S	RE	CÓDIGO ISO	P		CÓDIGO ANSI
						4415	4425	
PM	09 3/8	9.3	3.18	0.40	CNMG 09 03 04-PM	☆	★	CNMG 321-PM
		<i>.365</i>	<i>.125</i>	<i>.016</i>				
		8.9	3.18	0.79	CNMG 09 03 08-PM	☆	★	CNMG 322-PM
		<i>.349</i>	<i>.125</i>	<i>.031</i>				
	12 1/2	12.5	4.76	0.40	CNMG 12 04 04-PM	☆	★	CNMG 431-PM
		<i>.492</i>	<i>.188</i>	<i>.016</i>				
		12.1	4.76	0.79	CNMG 12 04 08-PM	☆	★	CNMG 432-PM
		<i>.476</i>	<i>.188</i>	<i>.031</i>				
		11.7	4.76	1.19	CNMG 12 04 12-PM	☆	★	CNMG 433-PM
		<i>.460</i>	<i>.188</i>	<i>.047</i>				
	16 5/8	11.3	4.76	1.59	CNMG 12 04 16-PM	☆	★	CNMG 434-PM
		<i>.445</i>	<i>.188</i>	<i>.063</i>				
15.3		6.35	0.79	CNMG 16 06 08-PM	☆	★	CNMG 542-PM	
	<i>.603</i>	<i>.250</i>	<i>.031</i>					
19 3/4	14.9	6.35	1.19	CNMG 16 06 12-PM	☆	★	CNMG 543-PM	
	<i>.587</i>	<i>.250</i>	<i>.047</i>					
	14.5	6.35	1.59	CNMG 16 06 16-PM	☆	★	CNMG 544-PM	
	<i>.572</i>	<i>.250</i>	<i>.063</i>					
QM	09 3/8	9.3	3.18	0.40	CNMG 09 03 04-QM	☆	★	CNMG 321-QM
		<i>.365</i>	<i>.125</i>	<i>.016</i>				
		8.9	3.18	0.79	CNMG 09 03 08-QM	☆	★	CNMG 322-QM
		<i>.349</i>	<i>.125</i>	<i>.031</i>				
	12 1/2	12.5	4.76	0.40	CNMG 12 04 04-QM	☆	★	CNMG 431-QM
		<i>.492</i>	<i>.188</i>	<i>.016</i>				
		12.1	4.76	0.79	CNMG 12 04 08-QM	☆	★	CNMG 432-QM
		<i>.476</i>	<i>.188</i>	<i>.031</i>				
		11.7	4.76	1.19	CNMG 12 04 12-QM	☆	★	CNMG 433-QM
		<i>.460</i>	<i>.188</i>	<i>.047</i>				
	16 5/8	11.3	4.76	1.59	CNMG 12 04 16-QM	☆	★	CNMG 434-QM
		<i>.445</i>	<i>.188</i>	<i>.063</i>				
15.7		6.35	0.40	CNMG 16 06 04-QM	☆	★	CNMG 541-QM	
	<i>.619</i>	<i>.250</i>	<i>.016</i>					
19 3/4	15.3	6.35	0.79	CNMG 16 06 08-QM	☆	★	CNMG 542-QM	
	<i>.603</i>	<i>.250</i>	<i>.031</i>					
	14.9	6.35	1.19	CNMG 16 06 12-QM	☆	★	CNMG 543-QM	
	<i>.587</i>	<i>.250</i>	<i>.047</i>					
XM	14.5	6.35	1.59	CNMG 16 06 16-QM	☆	★	CNMG 544-QM	
	<i>.572</i>	<i>.250</i>	<i>.063</i>					
	18.5	6.35	0.79	CNMG 19 06 08-QM	☆	★	CNMG 642-QM	
	<i>.730</i>	<i>.250</i>	<i>.031</i>					
	18.1	6.35	1.19	CNMG 19 06 12-QM	☆	★	CNMG 643-QM	
	<i>.714</i>	<i>.250</i>	<i>.047</i>					
XM	17.7	6.35	1.59	CNMG 19 06 16-QM	☆	★	CNMG 644-QM	
	<i>.699</i>	<i>.250</i>	<i>.063</i>					
	12.5	4.76	0.40	CNMG 12 04 04-XM	☆	★	CNMG 431-XM	
	<i>.492</i>	<i>.188</i>	<i>.016</i>					
	12.1	4.76	0.79	CNMG 12 04 08-XM	☆	★	CNMG 432-XM	
	<i>.476</i>	<i>.188</i>	<i>.031</i>					
	11.7	4.76	1.19	CNMG 12 04 12-XM	☆	★	CNMG 433-XM	
	<i>.460</i>	<i>.188</i>	<i>.047</i>					



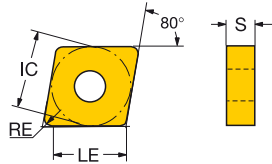
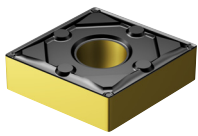
A26



F2

Plaquita T-Max® P para torneado

Plaquita tipo C (Rómbica de 80°)



			LE	S	RE	CÓDIGO ISO	P		CÓDIGO ANSI
							4115	4425	
Desbaste	PR	12 1/2	12.1	4.76	0.79	CNMG 12 04 08-PR	☆	★	CNMG 432-PR
			.476	.188	.031				
			11.7	4.76	1.19	CNMG 12 04 12-PR	☆	★	CNMG 433-PR
			.460	.188	.047				
		11.3	4.76	1.59	CNMG 12 04 16-PR	☆	★	CNMG 434-PR	
		.445	.188	.063					
		16 5/8	14.9	6.35	1.19	CNMG 16 06 12-PR	☆	★	CNMG 543-PR
			.587	.250	.047				
			14.5	6.35	1.59	CNMG 16 06 16-PR	☆	★	CNMG 544-PR
			.572	.250	.063				
		13.7	6.35	2.38	CNMG 16 06 24-PR	☆	★	CNMG 546-PR	
		.540	.250	.094					
	19 3/4	18.5	6.35	0.79	CNMG 19 06 08-PR	☆	★	CNMG 642-PR	
		.730	.250	.031					
		18.1	6.35	1.19	CNMG 19 06 12-PR	☆	★	CNMG 643-PR	
		.714	.250	.047					
	17.7	6.35	1.59	CNMG 19 06 16-PR	☆	★	CNMG 644-PR		
	.699	.250	.063						
	16.9	6.35	2.38	CNMG 19 06 24-PR	☆	★	CNMG 646-PR		
	.667	.250	.094						
	QR	12 1/2	12.1	4.76	0.79	CNMM 12 04 08-PR	☆	★	CNMM 432-PR
			.476	.188	.031				
			11.7	4.76	1.19	CNMM 12 04 12-PR	☆	★	CNMM 433-PR
			.460	.188	.047				
11.3		4.76	1.59	CNMM 12 04 16-PR	☆	★	CNMM 434-PR		
.445		.188	.063						
16 5/8		15.3	6.35	0.79	CNMM 16 06 08-PR	☆	★	CNMM 542-PR	
		.603	.250	.031					
		14.9	6.35	1.19	CNMM 16 06 12-PR	☆	★	CNMM 543-PR	
		.587	.250	.047					
14.5		6.35	1.59	CNMM 16 06 16-PR	☆	★	CNMM 544-PR		
.572		.250	.063						
19 3/4	18.1	6.35	1.19	CNMM 19 06 12-PR	☆	★	CNMM 643-PR		
	.714	.250	.047						
	17.7	6.35	1.59	CNMM 19 06 16-PR	☆	★	CNMM 644-PR		
	.699	.250	.063						
16.9	6.35	2.38	CNMM 19 06 24-PR	☆	★	CNMM 646-PR			
.667	.250	.094							
QR	12 1/2	12.1	4.76	0.79	CNMM 12 04 08-QR	☆	★	CNMM 432-QR	
		.476	.188	.031					
		11.7	4.76	1.19	CNMM 12 04 12-QR	☆	★	CNMM 433-QR	
		.460	.188	.047					
	11.3	4.76	1.59	CNMM 12 04 16-QR	☆	★	CNMM 434-QR		
	.445	.188	.063						
	16 5/8	14.9	6.35	1.19	CNMM 16 06 12-QR	☆	★	CNMM 543-QR	
		.587	.250	.047					
		14.5	6.35	1.59	CNMM 16 06 16-QR	☆	★	CNMM 544-QR	
		.572	.250	.063					
	13.7	6.35	2.38	CNMM 16 06 24-QR	☆	★	CNMM 546-QR		
	.540	.250	.094						
19 3/4	18.1	6.35	1.19	CNMM 19 06 12-QR	☆	★	CNMM 643-QR		
	.714	.250	.047						
	17.7	6.35	1.59	CNMM 19 06 16-QR	☆	★	CNMM 644-QR		
	.699	.250	.063						
16.9	6.35	2.38	CNMM 19 06 24-QR	☆	★	CNMM 646-QR			
.667	.250	.094							

B

C

D

E

F



A26

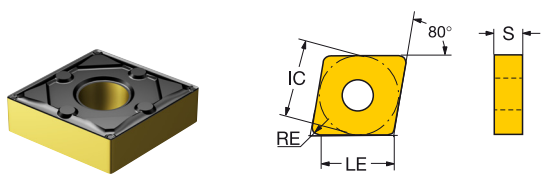


F2



Plaquita T-Max® P para torneado

Plaquita tipo C (Rómbica de 80°)



B

						P				
		IC	LE	S	RE	CÓDIGO ISO	4415	4425	CÓDIGO ANSI	
Roughing	XMR	12	1/2	12.1	4.76	0.79	CNMG 12 04 08-XMR	★	★	CNMG 432-XMR
				.476	.188	.031				
				11.7	4.76	1.19	CNMG 12 04 12-XMR	★	★	CNMG 433-XMR
				.480	.188	.047				
				11.3	4.76	1.59	CNMG 12 04 16-XMR	★	★	CNMG 434-XMR
		.445	.188	.063						

C

D

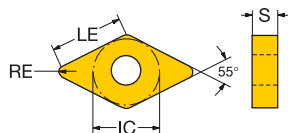
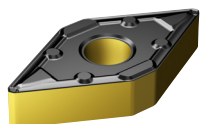
E

F



Plaquita T-Max® P para torneado

Plaquita tipo D (Rómbica de 55°)



		LE	S	RE	CÓDIGO ISO	P		CÓDIGO ANSI	
						4415	4425		
Acabado	WF	11 3/8	11.2 4.76 0.40	.442 .188 .016	DNMX 11 04 04-WF	★	☆	DNMX 331-WF	
					DNMX 11 04 08-WF	★	☆	DNMX 332-WF	
					DNMX 11 04 12-WF	★	☆	DNMX 333-WF	
		15 1/2	15.1 4.76 0.40	.595 .188 .016	DNMX 15 04 04-WF	★	☆	DNMX 431-WF	
					DNMX 15 04 08-WF	★	☆	DNMX 432-WF	
					DNMX 15 04 12-WF	★	☆	DNMX 433-WF	
		15.1 6.35 0.40	.595 .250 .016	DNMX 15 06 04-WF	★	☆	DNMX 441-WF		
				DNMX 15 06 08-WF	★	☆	DNMX 442-WF		
				DNMX 15 06 12-WF	★	☆	DNMX 443-WF		
				14.3 6.35 1.19	.579 .250 .031	DNMX 15 06 04-WF	★	☆	DNMX 441-WF
						DNMX 15 06 08-WF	★	☆	DNMX 442-WF
						DNMX 15 06 12-WF	★	☆	DNMX 443-WF
	PF	11 3/8	11.2 4.76 0.40	.442 .188 .016	DNMG 11 04 04-PF	★	☆	DNMG 331-PF	
					DNMG 11 04 08-PF	★	☆	DNMG 332-PF	
					DNMG 11 04 12-PF	★	☆	DNMG 333-PF	
		15 1/2	15.1 4.76 0.40	.595 .188 .016	DNMG 15 04 04-PF	★	☆	DNMG 431-PF	
					DNMG 15 04 08-PF	★	☆	DNMG 432-PF	
					DNMG 15 04 12-PF	★	☆	DNMG 433-PF	
		15.1 6.35 0.40	.595 .250 .016	DNMG 15 06 04-PF	★	☆	DNMG 441-PF		
				DNMG 15 06 08-PF	★	☆	DNMG 442-PF		
				DNMG 15 06 12-PF	★	☆	DNMG 443-PF		
				14.3 6.35 1.19	.579 .250 .031	DNMG 15 06 04-PF	★	☆	DNMG 441-PF
						DNMG 15 06 08-PF	★	☆	DNMG 442-PF
						DNMG 15 06 12-PF	★	☆	DNMG 443-PF
	LC	11 3/8	10.8 4.76 0.79	.426 .188 .031	DNMG 11 04 08-LC	★	☆	DNMG 332-LC	
					DNMG 11 04 12-LC	★	☆	DNMG 333-LC	
		15 1/2	15.1 4.76 0.40	.595 .188 .016	DNMG 15 04 04-LC	★	☆	DNMG 431-LC	
					DNMG 15 04 08-LC	★	☆	DNMG 432-LC	
					DNMG 15 04 12-LC	★	☆	DNMG 433-LC	
	14.7 6.35 0.79	.579 .188 .031	DNMG 15 06 08-LC	★	☆	DNMG 442-LC			
15.1 6.35 0.40			.595 .250 .016	DNMG 15 06 04R/L-K	★	☆	DNMG 441L-K		
				DNMG 15 06 08R/L-K	★	☆	DNMG 442L-K		
XF	15 1/2	14.7 6.35 0.79	.579 .250 .031	DNMG 15 06 08-XF	★	☆	DNMG 442-XF		



A26

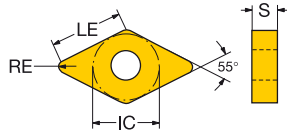
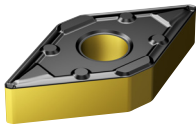


F2



Plaquita T-Max® P para torneado

Plaquita tipo D (Rómbica de 55°)



B

		LE	S	RE	CÓDIGO ISO	P		CÓDIGO ANSI		
						4415	4425			
WM	11 3/8	10.8	4.76	0.79	DNMX 11 04 08-WM	☆	★	DNMX 332-WM		
		.426	.188	.031						
		10.4	4.76	1.19	DNMX 11 04 12-WM	☆	★	DNMX 333-WM		
		.411	.188	.047						
		14.7	6.35	0.79						
		.579	.250	.031						
	15 1/2	14.7	4.76	0.79	DNMX 15 04 08-WM	☆	★	DNMX 432-WM		
		.579	.188	.031						
		14.7	6.35	0.79	DNMX 15 06 08-WM	☆	★	DNMX 442-WM		
		.579	.250	.031						
		14.3	6.35	1.19	DNMX 15 06 12-WM	☆	★	DNMX 443-WM		
		.563	.250	.047						
WMX	15 1/2	14.7	4.76	0.79	DNMX 15 04 08-WMX	☆	★	DNMX 432-WMX		
		.579	.188	.031						
		14.3	4.76	1.19	DNMX 15 04 12-WMX	☆	★	DNMX 433-WMX		
		.563	.188	.047						
		14.7	6.35	0.79	DNMX 15 06 08-WMX	☆	★	DNMX 442-WMX		
		.579	.250	.031						
	15 1/2	14.3	6.35	1.19	DNMX 15 06 12-WMX	☆	★	DNMX 443-WMX		
		.563	.250	.047						
		13.9	6.35	1.59	DNMX 15 06 16-WMX	☆	★	DNMX 444-WMX		
		.547	.250	.063						
		Medio	11 3/8	11.2	4.76	0.40	DNMG 11 04 04-PM	☆	★	DNMG 331-PM
				.442	.188	.016				
10.8	4.76			0.79	DNMG 11 04 08-PM	☆	★	DNMG 332-PM		
.426	.188			.031						
10.4	4.76			1.19	DNMG 11 04 12-PM	☆	★	DNMG 333-PM		
.411	.188			.047						
15 1/2	15.1		4.76	0.40	DNMG 15 04 04-PM	☆	★	DNMG 431-PM		
	.595		.188	.016						
	14.7		4.76	0.79	DNMG 15 04 08-PM	☆	★	DNMG 432-PM		
	.579		.188	.031						
	14.3		4.76	1.19	DNMG 15 04 12-PM	☆	★	DNMG 433-PM		
	.563		.188	.047						
PM	15 1/2	15.1	6.35	0.40	DNMG 15 06 04-PM	☆	★	DNMG 441-PM		
		.595	.250	.016						
		14.7	6.35	0.79	DNMG 15 06 08-PM	☆	★	DNMG 442-PM		
		.579	.250	.031						
		14.3	6.35	1.19	DNMG 15 06 12-PM	☆	★	DNMG 443-PM		
		.563	.250	.047						
	13.9	6.35	1.59	DNMG 15 06 16-PM	☆	★	DNMG 444-PM			
		.547	.250	.063						
		11 3/8	10.4	4.76	1.19	DNMG 11 04 12-QM	☆	★	DNMG 333-QM	
			.411	.188	.047					
			15 1/2	14.7	4.76	0.79	DNMG 15 04 08-QM	☆	★	DNMG 432-QM
				.579	.188	.031				
14.3	4.76			1.19	DNMG 15 04 12-QM	☆	★	DNMG 433-QM		
.563	.188			.047						
15.1	6.35	0.40		DNMG 15 06 04-QM	☆	★	DNMG 441-QM			
.595	.250	.016								
14.7	6.35	0.79	DNMG 15 06 08-QM	☆	★	DNMG 442-QM				
	.579	.250	.031							
	14.3	6.35	1.19	DNMG 15 06 12-QM	☆	★	DNMG 443-QM			
	.563	.250	.047							
	13.9	6.35	1.59	DNMG 15 06 16-QM	☆	★	DNMG 444-QM			
	.547	.250	.063							
XM	15 1/2	14.7	6.35	0.79	DNMG 15 06 08-XM	☆	★	DNMG 442-XM		
		.579	.250	.031						
		14.3	6.35	1.19	DNMG 15 06 12-XM	☆	★	DNMG 443-XM		
		.563	.250	.047						

F



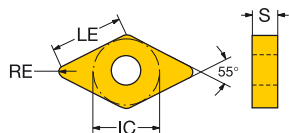
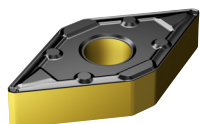
A26



F2

Plaquita T-Max® P para torneado

Plaquita tipo D (Rómbica de 55°)



		LE	S	RE	CÓDIGO ISO	P		CÓDIGO ANSI				
						4415	4425					
Desbaste	XMR	15	1/2	14.3	6.35	1.19	☆	★	DNMG 15 06 12-XMR	☆	★	DNMG 443-XMR
				.563	.250	.047						
	PR	15	1/2	14.7	4.76	0.79	☆	★	DNMG 15 04 08-PR	☆	★	DNMG 432-PR
					.579	.188	.031					
			14.3	4.76	1.19	DNMG 15 04 12-PR	☆	★	DNMG 433-PR			
							.563	.188	.047			
			13.9	4.76	1.59	DNMG 15 04 16-PR	☆	★	DNMG 434-PR			
							.547	.188	.063			
		14.7	6.35	0.79	DNMG 15 06 08-PR	☆	★	DNMG 442-PR				
						.579	.250	.031				
		14.3	6.35	1.19	DNMG 15 06 12-PR	☆	★	DNMG 443-PR				
						.563	.250	.047				
		13.9	6.35	1.59	DNMG 15 06 16-PR	☆	★	DNMG 444-PR				
						.547	.250	.063				
	19	5/8	18.6	6.35	0.79	DNMG 19 06 08-PR	☆	★	DNMG 542-PR			
							.731	.250	.031			
	QR	15	1/2	14.7	6.35	0.79	☆	★	DNMM 15 06 08-PR	☆	★	DNMM 442-PR
					.579	.250	.031					
			14.3	6.35	1.19	DNMM 15 06 12-PR	☆	★	DNMM 443-PR			
							.563	.250	.047			
			13.9	6.35	1.59	DNMM 15 06 16-PR	☆	★	DNMM 444-PR			
							.547	.250	.063			
	14.3	6.35	1.19	DNMM 15 06 08-QR	☆	★	DNMM 442-QR					
					.579	.250	.031					
			DNMM 15 06 12-QR	☆	★	DNMM 443-QR						

B

C

D

E

F



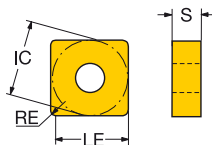
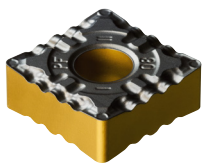
A26



F2

Plaquita T-Max® P para torneado

Plaquita tipo S (Cuadrada)



		LE	S	RE	CÓDIGO ISO	P		CÓDIGO ANSI						
						4415	4425							
Acabado	PF	12	1/2	11.9	4.76	0.79	★	☆	SNMG 12 04 08-PF	★	☆	SNMG 432-PF		
				.469	.188	.031								
				11.5	4.76	1.19	SNMG 12 04 12-PF	★	☆	SNMG 433-PF				
				.453	.188	.047								
		Medio	PM	09	3/8	9.1	3.18	0.40	☆	★	SNMG 09 03 04-PM	☆	★	SNMG 321-PM
						.359	.125	.016						
				8.7	3.18	0.79	SNMG 09 03 08-PM	☆	★	SNMG 322-PM				
				.344	.125	.031								
				12	1/2	12.3	4.76	0.40	☆	★	SNMG 12 04 04-PM	☆	★	SNMG 431-PM
				.484	.188	.016								
			11.9	4.76	0.79	SNMG 12 04 08-PM	☆	★	SNMG 432-PM					
			.469	.188	.031									
			11.5	4.76	1.19	SNMG 12 04 12-PM	☆	★	SNMG 433-PM					
			.453	.188	.047									
			11.1	4.76	1.59	SNMG 12 04 16-PM	☆	★	SNMG 434-PM					
			.437	.188	.063									
		15	5/8	14.7	6.35	1.19	☆	★	SNMG 15 06 12-PM	☆	★	SNMG 543-PM		
		.578	.250	.047										
		14.3	6.35	1.59	SNMG 15 06 16-PM	☆	★	SNMG 544-PM						
		.562	.250	.063										
	QM	09	3/8	8.7	3.18	0.79	☆	★	SNMG 09 03 08-QM	☆	★	SNMG 322-QM		
			.344	.125	.031									
			12	1/2	11.9	4.76	0.79	☆	★	SNMG 12 04 08-QM	☆	★	SNMG 432-QM	
			.469	.188	.031									
			11.5	4.76	1.19	SNMG 12 04 12-QM	☆	★	SNMG 433-QM					
			.453	.188	.047									
Desbaste	PR	12	1/2	11.9	4.76	0.79	☆	★	SNMG 12 04 08-PR	☆	★	SNMG 432-PR		
				.469	.188	.031								
				11.5	4.76	1.19	SNMG 12 04 12-PR	☆	★	SNMG 433-PR				
				.453	.188	.047								
				11.1	4.76	1.59	SNMG 12 04 16-PR	☆	★	SNMG 434-PR				
				.437	.188	.063								
				15	5/8	15.1	6.35	0.79	☆	★	SNMG 15 06 08-PR	☆	★	SNMG 542-PR
				.594	.250	.031								
				14.7	6.35	1.19	SNMG 15 06 12-PR	☆	★	SNMG 543-PR				
				.578	.250	.047								
				14.3	6.35	1.59	SNMG 15 06 16-PR	☆	★	SNMG 544-PR				
				.562	.250	.063								
			13.5	6.35	2.38	SNMG 15 06 24-PR	☆	★	SNMG 546-PR					
			.531	.250	.094									
			12	1/2	11.9	4.76	0.79	☆	★	SNMM 12 04 08-PR	☆	★	SNMM 432-PR	
			.469	.188	.031									
			11.5	4.76	1.19	SNMM 12 04 12-PR	☆	★	SNMM 433-PR					
			.453	.188	.047									
			15	5/8	14.7	6.35	1.19	☆	★	SNMM 15 06 12-PR	☆	★	SNMM 543-PR	
			.578	.250	.047									
			14.3	6.35	1.59	SNMM 15 06 16-PR	☆	★	SNMM 544-PR					
			.562	.250	.063									
			19	3/4	17.9	6.35	1.19	☆	★	SNMM 19 06 12-PR	☆	★	SNMM 643-PR	
			.703	.250	.047									
		17.5	6.35	1.59	SNMM 19 06 16-PR	☆	★	SNMM 644-PR						
		.687	.250	.063										
		16.7	6.35	2.38	SNMM 19 06 24-PR	☆	★	SNMM 646-PR						
		.656	.250	.094										
	QR	19	3/4	17.9	6.35	1.19	☆	★	SNMM 19 06 12-QR	☆	★	SNMM 643-QR		
			.703	.250	.047									
			17.5	6.35	1.59	SNMM 19 06 16-QR	☆	★	SNMM 644-QR					
			.687	.250	.063									



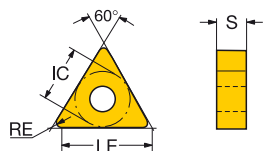
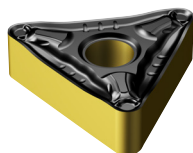
A26



F2

Plaquita T-Max® P para torneado

Plaquita tipo T (Triangular)



		LE	S	RE	CÓDIGO ISO	P		CÓDIGO ANSI		
						4415	4425			
Medio	PM	16	3/8	16.1	4.76	0.40	TNMG 16 04 04-PM	☆ ★	TNMG 331-PM	
				.634	.188	.016				
				15.7	4.76	0.79	TNMG 16 04 08-PM	☆ ★	TNMG 332-PM	
				.618	.188	.031				
				15.3	4.76	1.19	TNMG 16 04 12-PM	☆ ★	TNMG 333-PM	
		.602	.188	.047						
Desbaste	PR	16	3/8	15.7	4.76	0.79	TNMG 16 04 08-PR	☆ ★	TNMG 332-PR	
				.618	.188	.031				
				15.3	4.76	1.19	TNMG 16 04 12-PR	☆ ★	TNMG 333-PR	
				.602	.188	.047				



A26



F2

Recomendaciones de velocidad de corte

Las recomendaciones son válidas si se utiliza refrigerante.

ISO P	N.º CMC	Acero	Fuerza de corte específica k_{c1}	Dureza Brinell	<<<< RESISTENCIA AL DESGASTE		
					GC4415	GC4425	
					h_{ex} mm = avance f_n , mm/r		
					Velocidad de corte (V_c), m/min		
			N/mm ²	HB	0.1-0.4-0.8	0.1-0.4-0.8	
P1.1.Z.AN	01.1	Acero no aleado C = 0.1-0.25%	1500	125	560-400-290	500-340-240	
P1.2.Z.AN	01.2	C = 0.25-0.55%	1600	190	565-345-230	550-300-185	
P1.3.Z.AN	01.3	C = 0.55-0.80%	1700	190	455-325-240	395-265-190	
P2.1.Z.AN	02.1	Acero de baja aleación (elementos de aleación ≤5%) No templado	1700	175	440-315-240	430-305-230	
P2.5.Z.HT	02.2	Endurecido y templado	1850	330	310-200-145	275-180-135	
P3.0.Z.AN	03.11	Acero de alta aleación (elementos de aleación >5%) Recocido	1950	200	410-270-200	300-205-150	
P3.0.Z.HT	03.21	Acero de herram. templado	3000	380	170-110-80	115-80-65	
P1.5.C.UT	06.1	Acero fundido No aleado	1550	150	410-295-230	365-270-195	
P2.6.C.UT	06.2	De baja aleación (elementos de aleación ≤5%)	1600	200	265-185-145	250-170-120	
P3.0.C.UT	06.3	Alta aleación (elementos de aleación >5%)	2050	200	235-160-120	215-145-105	
ISO M	N.º CMC	Acero inoxidable	Fuerza de corte específica k_{c1}	Dureza Brinell	<<<< RESISTENCIA AL DESGASTE		
					GC1105	GC2220	
					h_{ex} mm = avance f_n , mm/r		
					Velocidad de corte (V_c), m/min		
			N/mm ²	HB	0.1-0.3-0.5	0.2-0.4-0.6	
M1.0.Z.AQ	05.21	Austenítico Barras/forjadas	1800	200	215-140-105	225-165-125	
M1.0.Z.PH	05.22	Austenítico Templado PH	2850	300	245-160-110	100-70-55	
M2.0.Z.AQ	05.23	Super austenítico	2250	200	250-165-115	130-100-75	
M3.1.Z.AQ	05.51	Austenítico-ferrítico (Dúplex) Barras/forjadas	2000	230	315-205-145	190-150-110	
M3.2.Z.AQ	05.52	No soldable ≥ 0,05% C Soldable < 0,05% C	2450	260	280-185-130	150-120-90	
M1.0.C.UT	15.21	Austenítico Fundición	1700	200	-	200-155-115	
M2.0.C.AQ	15.23	Super austenítico	2150	200	-	130-90-65	
M3.1.C.AQ	15.51	Austenítico-ferrítico (Dúplex) Fundición	1800	230	-	150-120-90	
M3.2.C.AQ	15.52	No soldable ≥ 0,05% C Soldable < 0,05% C	2250	260	-	125-105-80	
ISO S	N.º CMC	Material termo-resistente	Fuerza de corte específica k_{c1}	Dureza Brinell	<<<< RESISTENCIA AL DESGASTE		
					GC1105	CB7014	
					h_{ex} mm = avance f_n , mm/r		
					Velocidad de corte (V_c), m/min		
			N/mm ²	HB	0.1-0.3-0.5	0.05-0.15-0.25	
S1.0.U.AN	20.11	Superalaciones termorresistentes Base de hierro	2400	200	150-100-70	-	
S1.0.U.AG	20.12	Recocidas o tratadas en solución Envejecidas o tratadas en solución y envejecidas	2500	280	120-80-60	-	
S2.0.Z.AN	20.21	Base de níquel Recocidas o tratadas en solución	2650	250	90-55-30	320-280-250	
S2.0.Z.AG	20.22	Envejecidas o tratadas en solución y envejecidas	2900	350	80-50-27	280-245-220	
S2.0.C.NS	20.24	Fundición, o fundición y envejecido	3000	320	70-45-24	200-155-130	
S3.0.Z.AN	20.31	Base de cobalto Recocidas o tratadas en solución	2700	200	90-60-30	250-190-160	
S3.0.Z.AG	20.32	Tratadas en solución y envejecidas	3000	300	80-50-27	250-190-160	
S3.0.C.NS	20.33	Fundición, o fundición y envejecido	3100	320	70-45-24	200-155-130	